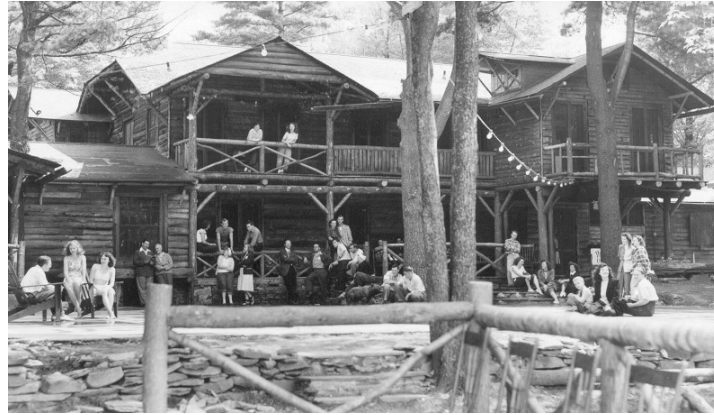


SUSTAINABLE FOREST OF GIVING

CELEBRATING SKY LAKE'S 72 YEARS OF MINISTRY BY SUSTAINING ITS FUTURE



In 1947, twelve pastors and laypersons pooled their personal financial savings to purchase the Sky Lake property. On April 10th of that same year, this daring act of faith was rewarded when the former Wyoming Conference voted to officially establish Sky Lake Camp & Retreat Center. At its dedication in 2003, Founders' Lodge was named to honor the legacy of this group of committed individuals.

You are now invited to become a co-founder of sorts yourself. To celebrate Sky Lake's 72nd birthday we are establishing the *Sustainable Forest of Giving*—a group of Sky Lake supporters who commit to contributing monthly, quarterly, or annually to the Sky Lake Annual Fund. While you may choose to give at any level, all those who set up a recurring contribution to the Annual Fund by April 30, 2019 at the Hemlock level or higher will be officially recognized as a co-founder of the *Sustainable Forest of Giving*.

It takes financial resources beyond camp and retreat fees and conference financial support to provide the life-transforming ministry that many of us have experienced at Sky Lake at some point over the past 72 years. Your contribution to the Sky Lake Annual Fund helps defray the costs associated with operating the ministry: electricity, propane, hospitality supplies, program equipment, tractor fuel, and more. In other words, the parts of the ministry that are not apt to be the most photogenic, but without which our ministry could not thrive.

Instructions on how to set up a recurring contribution can be found on the reverse.

SUSTAINABLE FOREST OF GIVING LEVELS

| | <i>Monthly</i> | <i>Quarterly</i> | <i>Annually</i> |
|---------------------|----------------|------------------|-----------------|
| <i>Black Cherry</i> | \$250 | \$750 | \$3,000 |
| <i>Sugar Maple</i> | \$100 | \$300 | \$1,200 |
| <i>Red Oak</i> | \$50 | \$150 | \$600 |
| <i>White Pine</i> | \$25 | \$75 | \$300 |
| <i>Hemlock</i> | \$19.47 | \$58.41 | \$233.64 |

SUSTAINABLE FOREST OF GIVING

CELEBRATING SKY LAKE'S 72 YEARS OF MINISTRY BY SUSTAINING ITS FUTURE

HOW TO BECOME A SUSTAINABLE FOREST OF GIVING CO-FOUNDER

The quickest and easiest way to setup your recurring contribution and become a co-founder, is to go to the shared Upper New York Camp and Retreat Ministries online donor portal at: campsandretreats.org/crm/assist

Once on the form, follow these easy steps:

- Click the “Designation” field; select “Sky Lake Annual Fund”
 - *please note that* contributions to the Sky Lake Campership Fund and/or any other fund are gratefully accepted, however only recurring contributions to the Sky Lake Annual Fund, at or above \$19.47 per month, are counted toward you becoming a co-founder of the ***Sustainable Forest of Giving***
- Click on the amount you wish to give monthly, quarterly, or annually
 - *please note that* in order for your contribution to count toward becoming a co-founder of the ***Sustainable Forest of Giving***, your monthly, quarterly, or annual contribution must match or exceed the designated amount of your desired level on the table on the front of this document. *If you plan to give quarterly or annually at an amount other than what is listed on the site, you will need to select “Other” and manually input that amount.*
- Check the “Make this a recurring gift” box under “Choose how often to give”
- The default frequency is monthly, if you wish to give quarterly or annually select the box next to “Give” and a drop-down menu will appear
 - *please note that* all gifts are processed by UNYCRM on the 8th day of the month
- Select which payment method you desire to use for your recurring contribution—both credit cards and direct debit are accepted
- If you are giving this gift on behalf of an organization (e.g. First Church or UMWomen) check the designated box
- We may publicly thank you for your contribution, if you desire to not be publicly acknowledged, please check the “I would like this gift to remain anonymous” box (you’ll still receive a thank you and an invite to join the Sky Lake Donor Newsletter email list.)
- If you have the means to give above and beyond the suggested levels, please contact Matt Williams, Director of Sky Lake, to discuss additional opportunities for giving.
- ***We thank you in advance for your generosity and promise to remain good stewards of your resources.***

SKY LAKE CAMP & RETREAT CENTER
501 William Law Road, Windsor NY 13865
607.467.2750 (office) | 607.467.4612 (fax) | info@skylakecenter.org
skylakecenter.org



SIGN UP TO RECEIVE THE LATEST NEWS AT: bit.ly/SkyLakeList